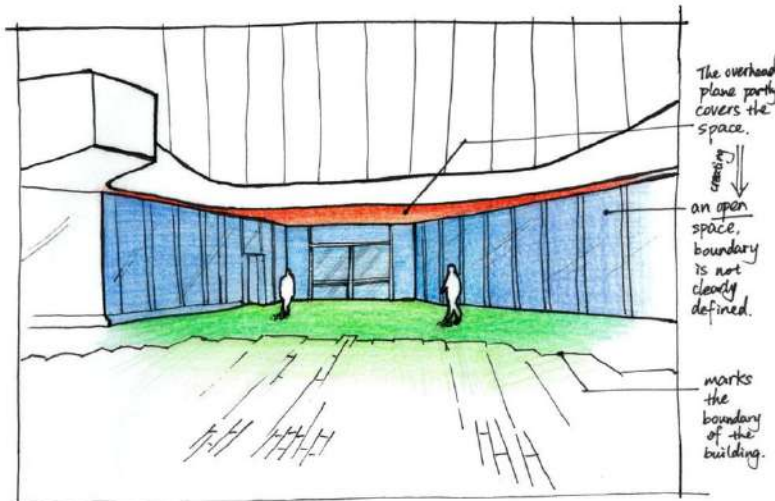


ANALYSIS DIAGRAM

HELENA CUI · STUDIO ALPHA · GROUND CONDITIONS PART 1

1:500 @ A3

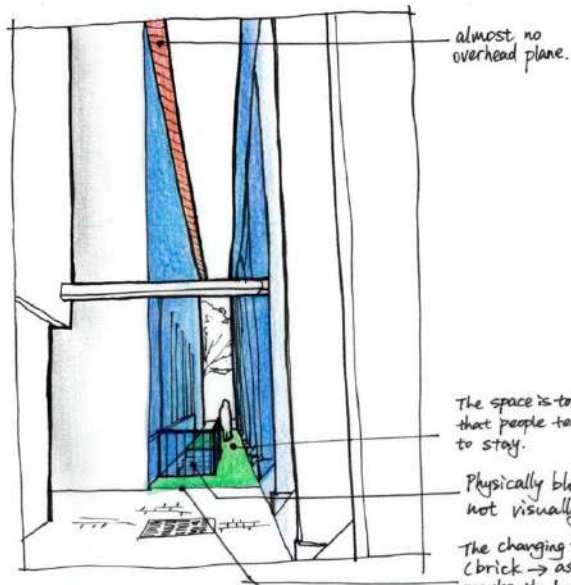
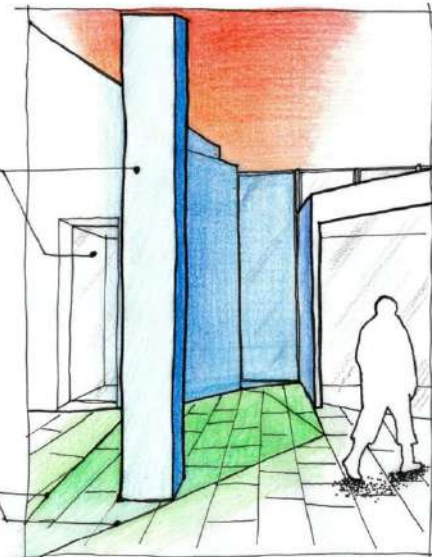
0 1 3 5 10 20



people seldomly stay in this area when there are two gates beside and the column blocking the view.

↓
An open (not entirely enclosed) space with introverted atmosphere.

the gentle slope defines the boundary of this space.



The space is too narrow that people tend not to stay.

Physically blocked, not visually.

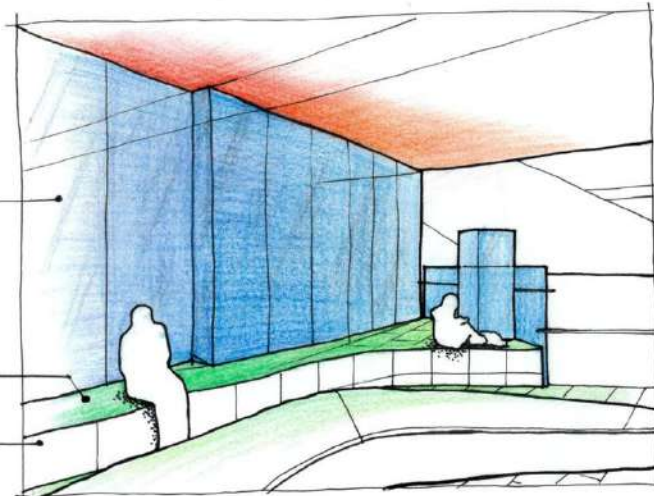
The changing texture (brick → asphalt) marks the beginning of the space.

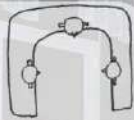
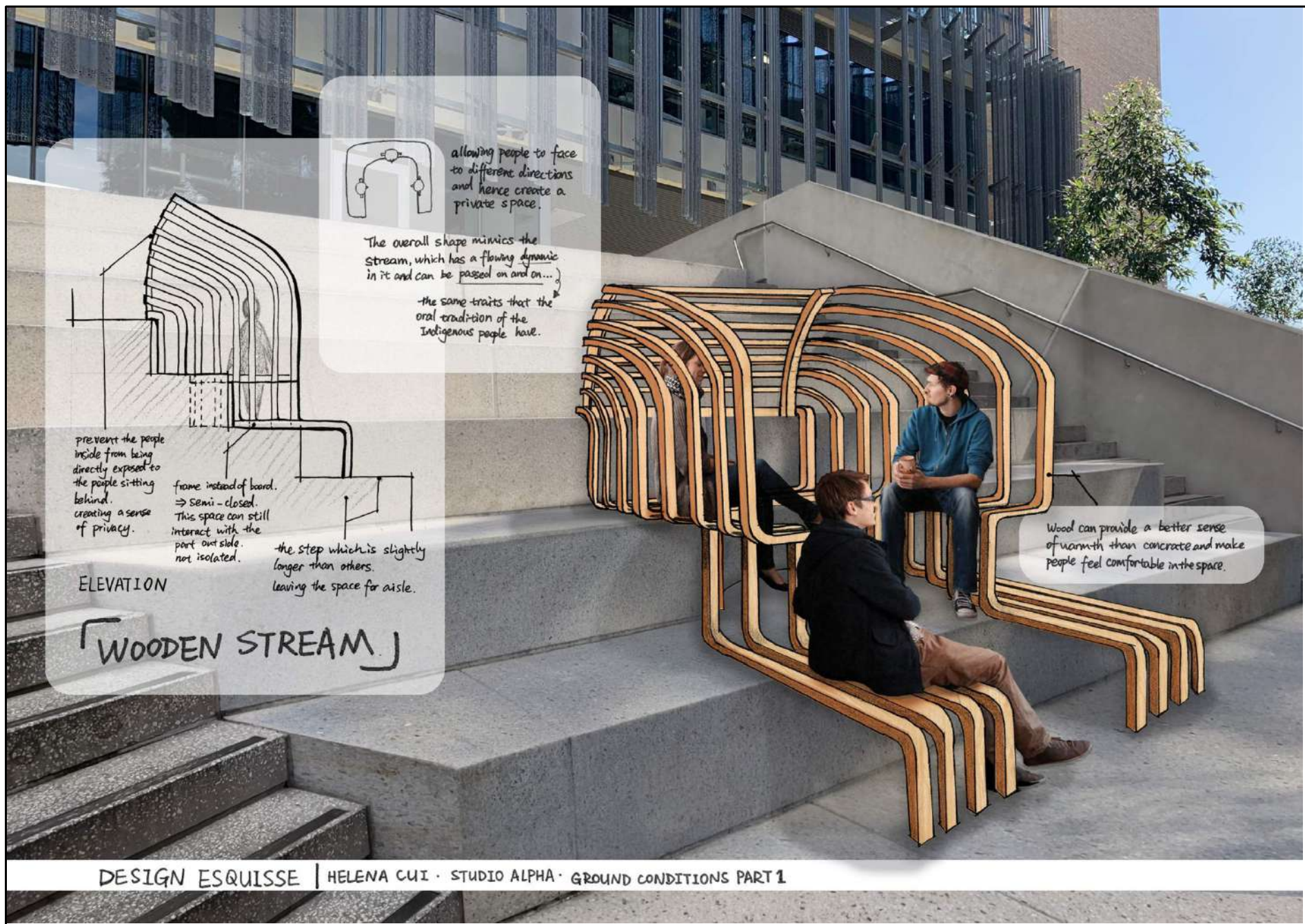
- Overhead plane
- Wall plane
- Base plane

Transparent glass wall is a physical boundary, but not visual boundary.
⇒ People usually do not sit too close to the glass.

floor plane ≠ ground plane

Gradually merges with the wall/floor. Not clearly defined.
But people won't sit on it when the height is too low.

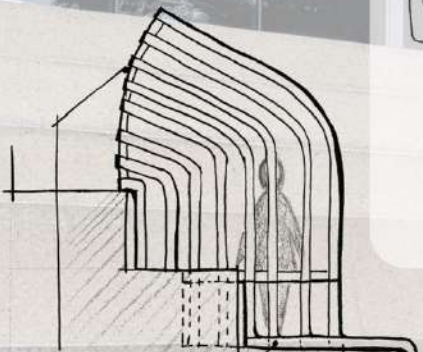




allowing people to face to different directions and hence create a private space.

The overall shape mimics the stream, which has a flowing dynamic in it and can be passed on and on...

-the same traits that the oral tradition of the Indigenous people have.



prevent the people inside from being directly exposed to the people sitting behind. creating a sense of privacy.

frame instead of board.
⇒ semi-closed.
This space can still interact with the part outside.
not isolated.

-the step which is slightly longer than others.
leaving the space for aisle.

ELEVATION

「WOODEN STREAM」

Wood can provide a better sense of warmth than concrete and make people feel comfortable in the space.